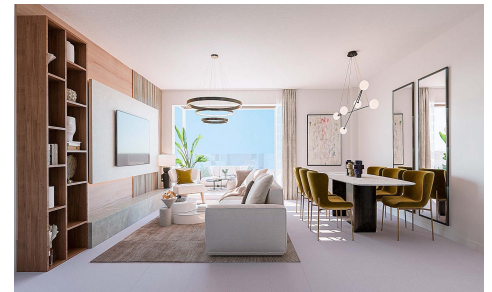
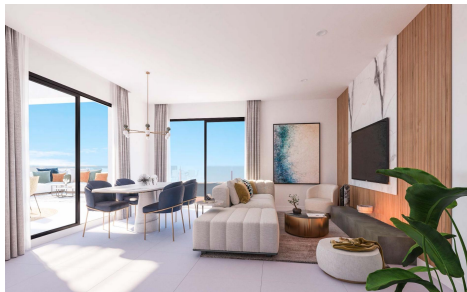
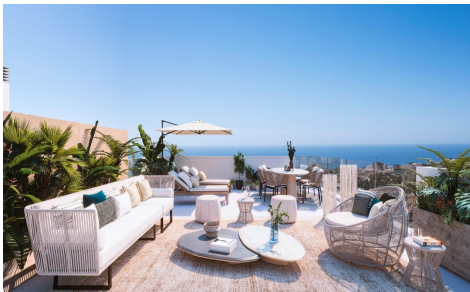




****** APARTMENTS, PENTHOUSES AND SEMI-DETACHED HOUSES FOR SALE IN BENALMÁDENA, 108 SQM**



2



2



103m²



N/A



*** PENTHOUSE FACING SOUTH WITH 108SQM OF OUTDOOR SPACES BETWEEN COVERED AND UNCOVERED TERRACES AND SOLARIUM !!! . **** APARTMENTS, PENTHOUSES AND SEMI-DETACHED HOUSES WITH SEA VIEWS FOR SALE IN BENALMÁDENA READY TO DELIVER AT THE END OF THIS YEAR !!! . An exclusive, private development situated in a privileged location in Benalmádena. Thanks to its elevated position, all homes boast breathtaking panoramic views of the sea and the coast. The sloping terrain allows for staggered housing, with large terraces that are further enhanced by glass railings that appear to blend seamlessly with the sea in front, allowing for maximum appreciation of the views...(Ask for More